

## RIVKLE® Standard blind rivet nuts

Steel zinc-plated | Thin head | Semi-hexagonal | Hexagonal | Open

Note: Thread according to ISO 6h (ISO 68-1) - Corrosion resistance 400 h salt spray | Cr(VI)-free

Technical information can be found on the last page.



Diameter (d)	Drilling diameter d nominal size	B	E max.	L <sub>2</sub>	e		Length (l) nominal size	S
					min.	max.		
M 4	6	6.7	0.3	6.0	0.5	3	10.70	S = 4.5 - e
M 5	7	7.9	0.3	7.5	0.5	3	13.00	S = 5.2 - e
M 6	9	9.8	0.4	8.3	0.5	3	13.75	S = 5.3 - e
M 8	11	12.0	0.4	11.3	0.5	3	17.25	S = 5.8 - e

All technical data refer to the measure mm

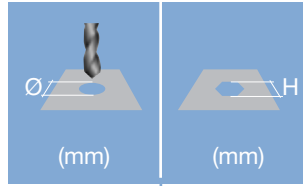




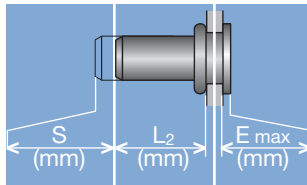
**Head diameter**  
**Overall length**  
**Thread size**



**Grip range**  
 Defines the range of total thickness of the customers part (even if it consists of more than one layer)



**Hole geometry**  
 If round → diameter  
 If hexagonal → wigth across flats

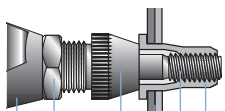


**Head projection after setting**  
 Variable according to the application (setting load, material substrate, etc.)

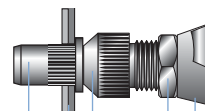
**Blind side projection after installation**  
 Defines the clearance needed on the blind side (cannot be used for quality control)

**Setting stroke**  
 Difference of total length before and after installation

**RIVKLE® Nut**



**RIVKLE® Stud**



- RIVKLE®
- Mandrel\*
- Customers part
- Anvil\*
- Counter nut
- Setting tool

\*in accordance to chosen RIVKLE®\*

All technical data refer to the measure mm

