

RIVKLE® Battery tool

RIVKLE® B2007 battery tool with 1 battery

Versatile and flexible battery tool with good ergonomic characteristics.

This setting tool is used to set RIVKLE® Standard blind rivet nuts made of aluminium (M4–M10), steel (M3–M10) and stainless steel (M3–M10).

Delivery scope:

- Basic tool
- 1 battery
- Charger
- Operating instructions
- Practical case for storage and transport

Threaded mandrels and anvils are not included in the delivery scope and must be ordered separately.

Technical information can be found on the last page.



Diameter (d)	Weight g
M 3 - M 10	2490

All technical data refer to the measure mm



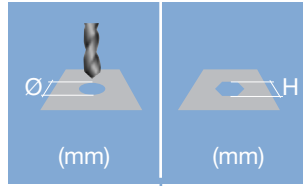


Head diameter
Overall length
Thread size



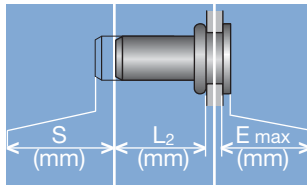
Grip range

Defines the range of total thickness of the customers part (even if it consists of more than one layer)



Hole geometry

If round → diameter
If hexagonal → wigth across flats



Head projection after setting

Variable according to the application (setting load, material substrate, etc.)

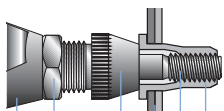
Blind side projection after installation

Defines the clearance needed on the blind side (cannot be used for quality control)

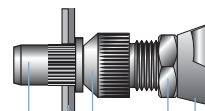
Setting stroke

Difference of total length before and after installation

RIVKLE® Nut



RIVKLE® Stud



- RIVKLE®
- Mandrel*
- Customers part
- Anvil*
- Counter nut
- Setting tool

in accordance to chosen RIVKLE®

All technical data refer to the measure mm

