

## RIVKLE® Standard blind rivet nuts

Steel zinc-plated | Thin head | Knurled | Cylindrical | Closed

Note: Thread according to ISO 6h (ISO 68-1) - Corrosion resistance 400 h salt spray | Cr(VI)-free

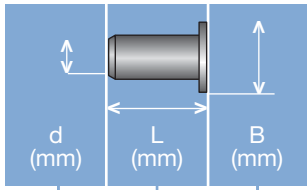
Technical information can be found on the last page.



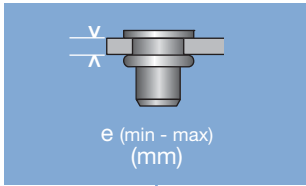
Diameter (d)	Article number	Drilling diameter d nominal size	B	E max.	L <sub>2</sub>	e		Length (l) nominal size	S
						min.	max.		
M 3	34377030015	5	5.8	0.3	10.2	0.7	1.5	12.6	S = 2.0 - e
	34377030030		5.8			1.5	3.0	14.2	S = 3.6 - e
M 4	34377040030	6	6.7	0.3	12.8	0.5	3.0	17.7	S = 4.9 - e
	34377040040		6.6			2.5	4.0	16.9	S = 5.7 - e
M 5	34377050025	7	7.6	0.3	13.5	0.7	2.5	18.2	S = 4.4 - e
	34377050040		7.6			2.5	4.0	19.8	S = 6.0 - e
M 6	34377060045	9	9.6	0.3	13.5	3.0	4.5	20.3	S = 6.6 - e
	34377060060		9.6			4.5	6.0	21.9	S = 7.3 - e
M 8	34377080030	11	11.8	0.4	18.0	0.8	3.0	23.3	S = 4.8 - e
	34377080045		11.8			3.0	4.5	24.9	S = 6.7 - e
	34377080060		11.8			4.5	6.0	26.5	S = 8.3 - e
M 10	34377100030	13	13.8	0.5	22.3	0.8	3.0	28.3	S = 5.5 - e
	34377100045		13.8			3.0	4.5	29.9	S = 7.1 - e
	34377100060		13.8			4.5	6.0	31.5	S = 8.7 - e
M 12	34377120030	16	16.8	0.5	21.1	0.8	3.0	33.2	S = 11.5 - e
	34377120045		17.0			3.0	4.5	34.8	S = 7.9 - e
	34377120060		17.0			4.5	6.0	36.4	S = 9.6 - e

All technical data refer to the measure mm

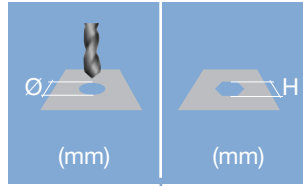




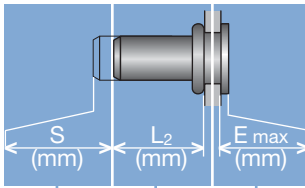
**Head diameter**  
**Overall length**  
**Thread size**



**Grip range**  
 Defines the range of total thickness of the customers part (even if it consists of more than one layer)



**Hole geometry**  
 If round → diameter  
 If hexagonal → width across flats

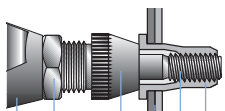


**Head projection after setting**  
 Variable according to the application (setting load, material substrate, etc.)

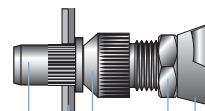
**Blind side projection after installation**  
 Defines the clearance needed on the blind side (cannot be used for quality control)

**Setting stroke**  
 Difference of total length before and after installation

**RIVKLE® Nut**



**RIVKLE® Stud**



- RIVKLE®
- Mandrel\*
- Customers part
- Anvil\*
- Counter nut
- Setting tool

\*in accordance to chosen RIVKLE®\*

All technical data refer to the measure mm

