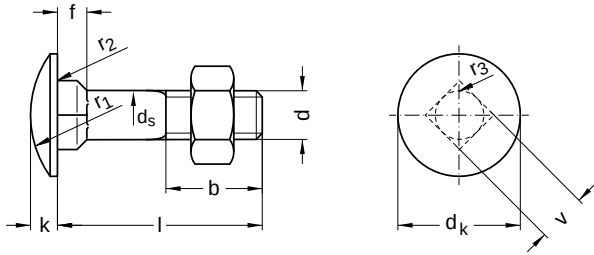


DIN 603

Mushroom head bolts

With square neck | without nut

Steel 8.8 | bright | Cr(VI)-free | Metric thread



Diameter (d)	b			dk		ds		f	
	l up to 125	l up to 200	l longer than 200	min.	max.	min.	max.	min.	max.
M6	18	24	–	15.45	16.55	5.52	6	3.40	4.60
M8	22	28	41	19.35	20.65	7.42	8	4.40	5.60
M10	26	32	45	23.35	24.65	9.42	10	5.40	6.60
M12	30	36	49	29.35	30.65	11.30	12	7.25	8.75

Diameter (d)	k		r1	r2	r3	Pitch (P)	v	
	min.	max.	nominal size	nominal size	max.		min.	
M6	3.12	3.88	12.6	0.5	0.9	1.00	6.48	5.52
M8	4.12	4.88	16.0	0.5	1.2	1.25	8.58	7.42
M10	4.62	5.38	19.2	0.5	1.5	1.50	10.58	9.42
M12	6.05	6.95	24.1	1.0	1.8	1.75	12.70	11.30

nominal size	Length (l)	
	min.	max.
20	18.95	21.05
25	23.95	26.05
30	28.95	31.05
40	38.75	41.25
45	43.75	46.25
50	48.75	51.25

nominal size	Length (l)	
	min.	max.
55	53.50	53.50
80	78.50	81.50

All technical data refer to the measure mm



DIN 603

Mushroom head bolts

With square neck | without nut

Steel 8.8 | bright | Cr(VI)-free | Metric thread

Diameter (d)	Length (l)							
	20	25	30	40	45	50	55	80
M6	●	●						
M8	●	●		●		●		
M10			●				●	●
M12			●		●			

- Combinations available in the eShop | Other sizes on request

All technical data refer to the measure mm

