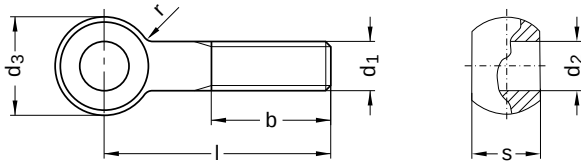


**DIN 444**  
**Eyebolts**

Form B: product class B

Steel 4.6 | bright | Cr(VI)-free | Metric thread



Diameter (d)	b			d <sub>2</sub>		d <sub>3</sub>		r			s		Pitch (P)
	l up to 125	l up to 200	l longer than 200	min.	max.	min.	max.	nominal size	min.	max.	min.	max.	
M5	16	–	–	5	5.03	11.57	12	2.5	1.88	3.75	5.88	6	0.80
M6	18	–	–	6	6.03	13.57	14	4	3.00	6.00	6.85	7	1.00
M8	22	28	–	8	8.04	17.57	18	4	3.00	6.00	8.85	9	1.25
M10	26	32	–	10	10.04	19.48	20	4	3.00	6.00	11.82	12	1.50
M12	30	36	49	12	12.04	24.48	25	6	4.50	9.00	13.82	14	1.75
M16	38	44	57	16	16.04	31.38	32	6	4.50	9.00	16.82	17	2.00
M20	46	52	65	18	18.04	39.38	40	6	4.50	9.00	21.79	22	2.50

nominal size	Length (l)	
	min.	max.
25	24.35	25.65
30	29.35	30.65
35	34.20	35.80
40	39.20	40.80
45	44.20	45.80
50	49.20	50.80
55	54.05	55.95
60	59.05	60.95

nominal size	Length (l)	
	min.	max.
65	64.05	65.95
70	69.05	70.95
75	74.05	75.95
80	79.05	80.95
90	88.90	91.10
100	98.90	101.10
110	108.90	111.10
120	118.90	121.10

nominal size	Length (l)	
	min.	max.
130	128.75	131.25
140	138.75	141.25
150	148.75	151.25
160	158.75	161.25
170	168.75	171.25
180	178.75	181.25
190	188.75	191.25
200	198.55	201.45

All technical data refer to the measure mm



**DIN 444**  
**Eyebolts**

Form B: product class B

Steel 4.6 | bright | Cr(VI)-free | Metric thread

Diameter (d)	Length (l)																								
	25	30	35	40	45	50	55	60	65	70	75	80	90	100	110	120	130	140	150	160	170	180	190	200	
M5			●	●																					
M6	●	●	●			●		●		●		●													
M8	●	●	●	●	●	●	●	●	●	●		●	●	●											
M10		●	●	●	●	●	●	●	●	●	●	●	●	●	●	●	●	●							
M12							●	●	●	●	●	●	●	●	●	●	●	●	●	●			●		●
M16										●		●	●	●	●	●	●	●	●	●	●	●	●	●	●
M20												●		●	●	●	●	●	●	●	●	●	●	●	

• Combinations available in the eShop | Other sizes on request

All technical data refer to the measure mm

